



The **Multi-dimensionality** of Sustainability

JD D'Cruz, CEO, Roundtable on Sustainable Palm Oil (RSPO)





RSPO's 20th anniversary: April 2024

A Global partnership to make palm oil sustainable.

Global membership:

5,800

members in over
100 countries and territories.

217

members in Latin America

800

in North America.



20% of global production under the strictest certification standards.

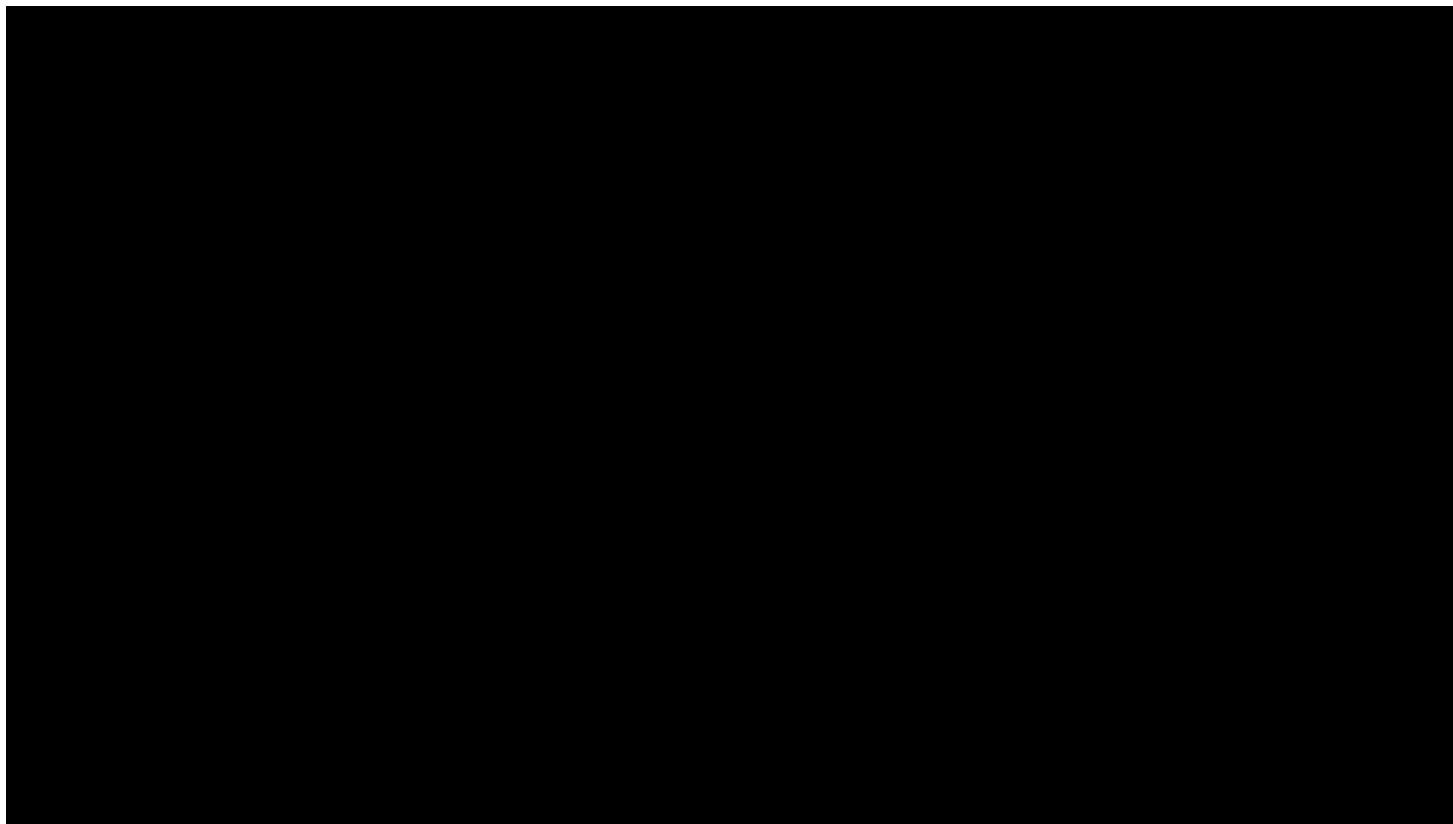


RSPO has shown **how sustainability and economic prosperity can go hand in hand** – helping improve the livelihoods of thousands of workers, smallholders and local communities all over the world.

Multi-stakeholder approach:
RSPO has developed and implemented the **world's most rigorous standards for producing and using certified sustainable palm oil** as an essential ingredient for our future.



RSPO IMPACT REPORT VIDEO:





The Americas' emerging leadership in the sustainable palm oil space.



Most recent milestone: over 2 million MT Certified Sustainable Palm Oil (CSPO).



CSPO production in Latin America now represents **one-third of the region's total production.**



Highest level of RSPO Certification among palm oil producing regions.



Fastest growing region in the world in terms of certification, **including smallholder certification.**



First Latin American smallholder groups RSPO Certified in the past 2 years in Colombia and Mexico.



First Peruvian smallholders were welcomed as **RSPO members** (July 2023).



North America:

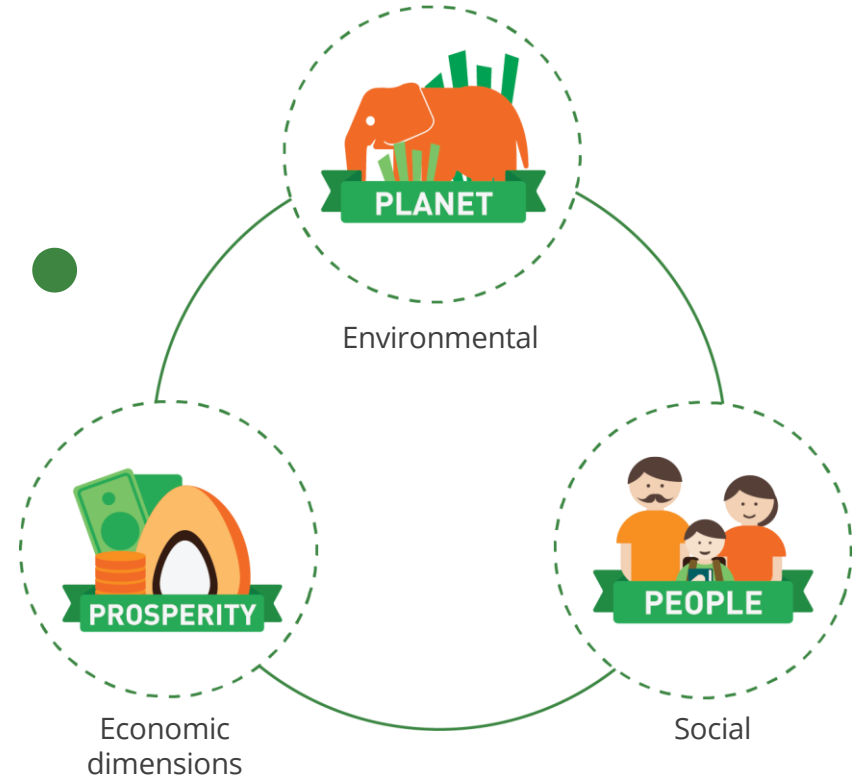
- Significant rise in RSPO CSPO uptake from year to year.
- Uptake of RSPO reached **88.5% uptake (2022)**.
- 13% of overall RSPO Membership.



Sustainability's multi-dimensional nature



**Multi-dimensional
by nature.**
3 interconnected
dimensions:





Jurisdictional Approach (JA) to Certification

Pilot projects implemented:

- Sabah State government of Malaysia - first to pledge its commitment (2015)
- Seruyan, Central Kalimantan, Indonesia.
- Ecuador - implementing the JA in 2017.

Collaborative approach:



Improve smallholder livelihoods.



Ensuring food security by prioritising land use.



Conserving important forest areas for biodiversity and the environment.

Key innovation of this landscape approach: **Sustainability issues are addressed at a geographical level** rather than only at the farm or plantation level.

Moving from 'sustainable products' to 'sustainable geographies', defined by jurisdiction or an area bounded by natural borders.

Collective approach enables **solving sustainability problems at the grassroots level**, optimising the use of resources and sharing expertise within the jurisdiction.

An aerial photograph of a lush green palm plantation with a winding river or canal cutting through it. The image is framed by decorative orange and red shapes in the top right and bottom left corners.

Sustainability is a Journey

The image features a white background with several decorative geometric shapes. On the left, there is a red rectangle partially overlapping an orange rectangle, with a green rounded rectangle below them. On the right, there is a large orange rounded rectangle at the top, a red rectangle to its right, a green rounded rectangle below the orange one, a white rectangle to the right of the green one, an orange rectangle below the white one, a small red rectangle to the left of the orange one, and a brown rounded rectangle at the bottom right.

¡Muchas gracias!



CALIFICA A NUESTRO CONFERENCISTA



Joseph D' Cruz, CEO RSPO