

Satellite-based tech for sustainable production

01-03-2024

Version 1.0

About us



Since 1998, Satellite mapping advisor to EC RED

Market leader: 60-70% of palm oil and cocoa companies,
significant part of coffee, soy and other commodities



We monitor environmental risks globally and cross-commodity



Powered by satellites,
simplified by AI,
in real-time.



Coffee



Palm Oil



Cocoa



Soy



Leather
& Beef



Sugar
Cane



Rubber



Pulp &
Paper



Coconut



Forest

Some selected clients



Satellite-based technology

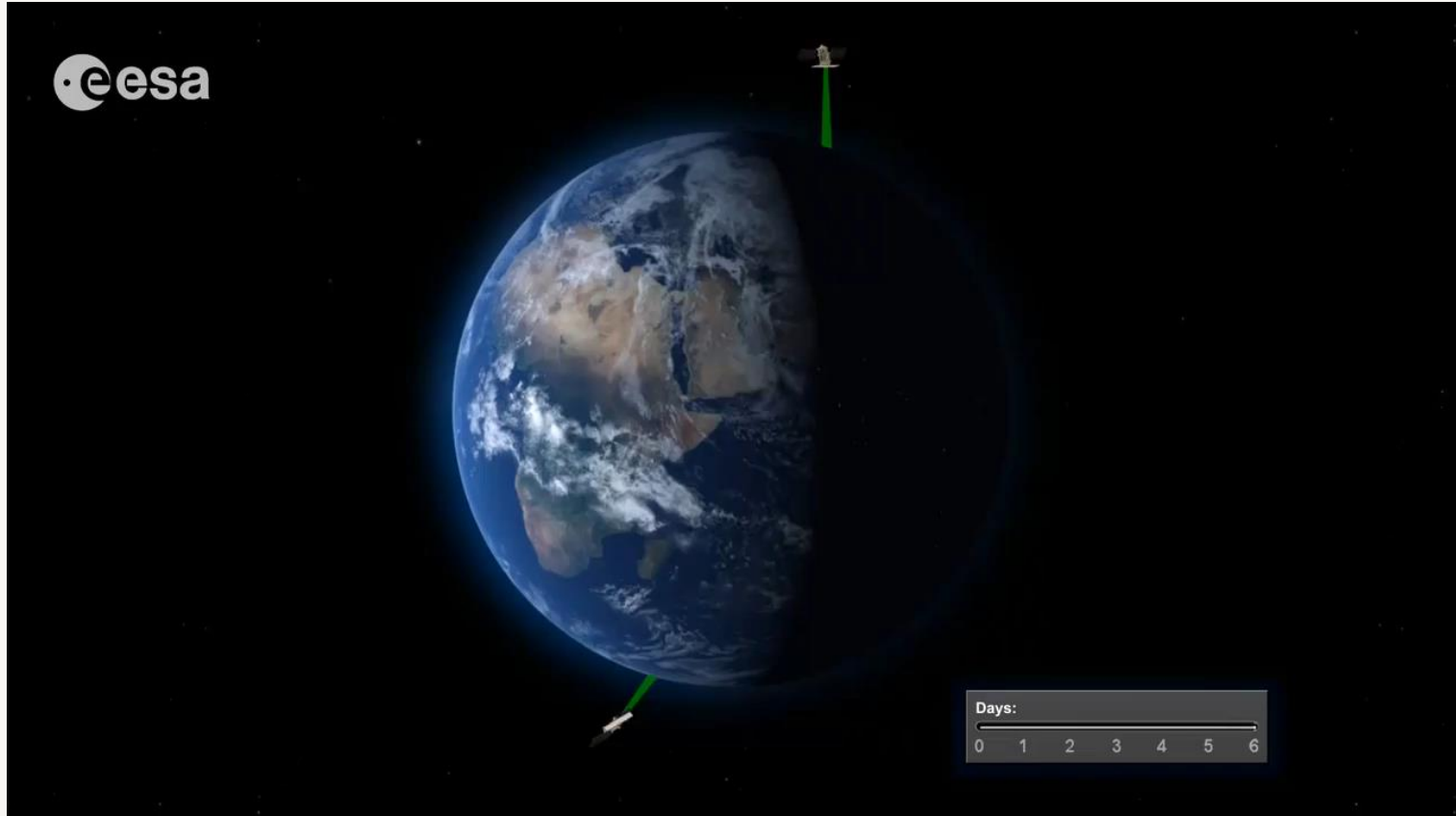


Applications of satellite data in palm



1. Counting palms and mapping **planted palm** distribution
2. Mapping **vegetation** and conservation values
3. Monitoring risk: **deforestation**, fires, waterlogging
4. Monitoring **carbon** / biomass distribution and change
5. Monitoring nutrient status, **health** and **yield**

Applications of satellite data in palm



EUDR

compliance





Steps towards compliance:

- 1. Traceability** – Global Geodatabase of plantation plots
- 2. Risk Management** – Forest and Legality Monitoring
- 3. Risk Mitigation** – Grievance tracker
- 4. Compliance Statement** – EC DDS



1. Traceability: global plantation plot geodatabase

Plot data are the basis: work towards 100% traceability to plantation

Our global Palm Oil supply chain geodatabase contains:

65689 plantations

[Geo-location and ownership]



2149 mills

[Geo-location and ownership]



173 refineries

[Geo-location and ownership]



494 ports and terminals

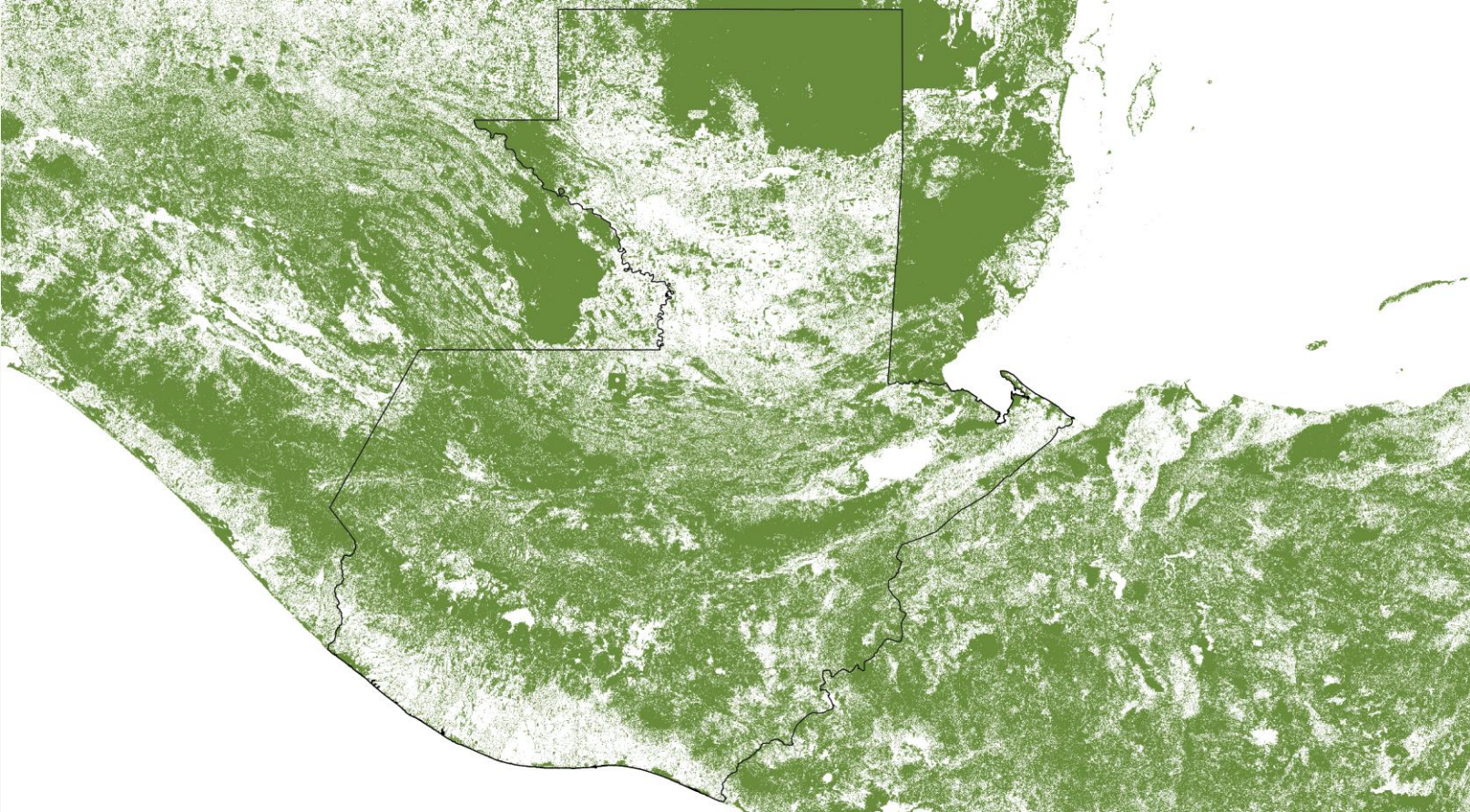
[Geo-location and ownership]



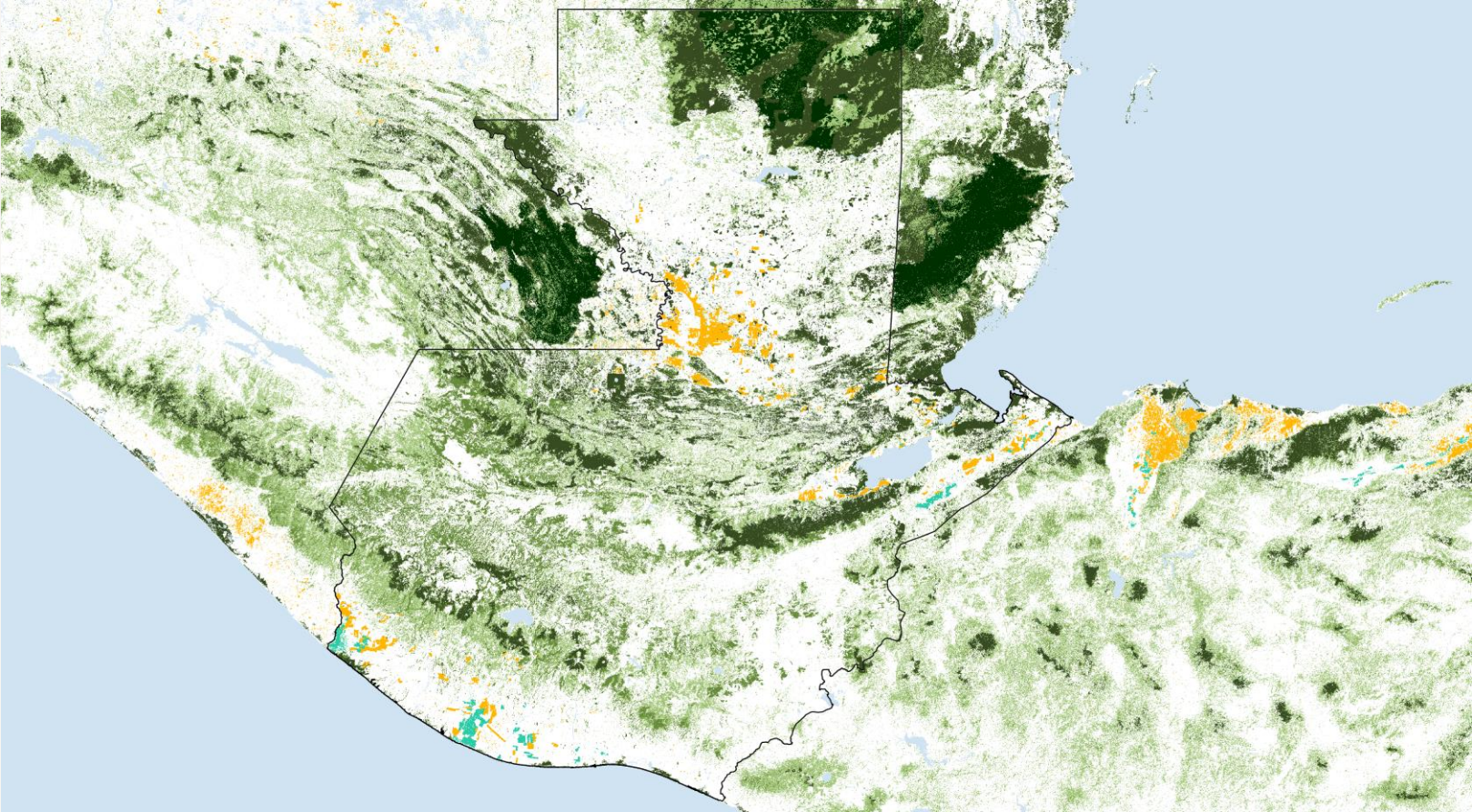
2. Risk Assessment: input Satellite data



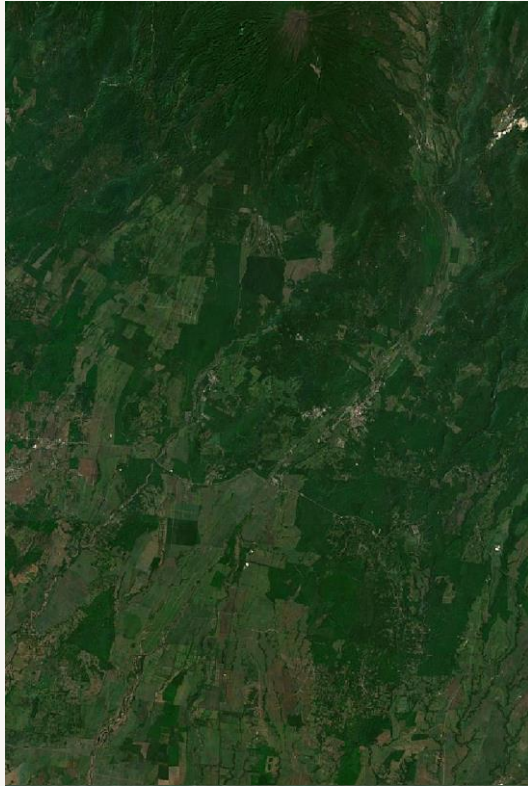
2. Risk Assessment: EC Forest Baseline 2020



2. Risk Assessment: Satellintelligence-Grepalma



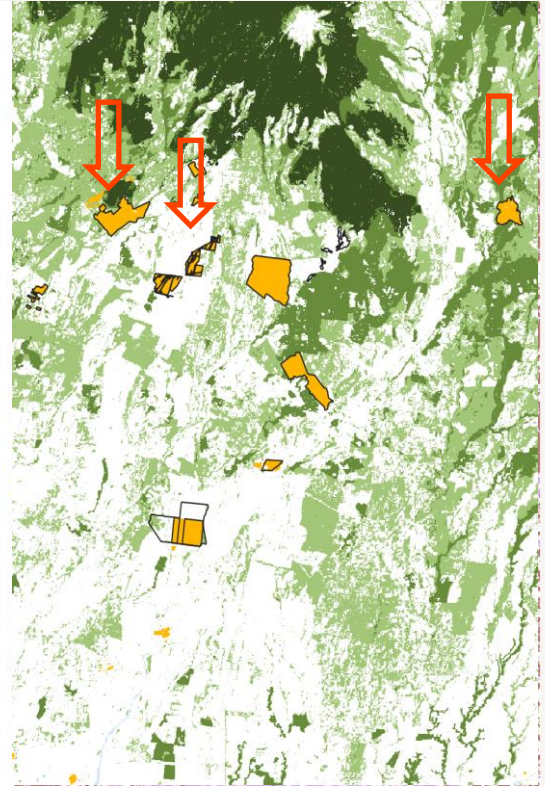
2. Risk Assessment: Open Data is Unsafe



Google VHR Satellite



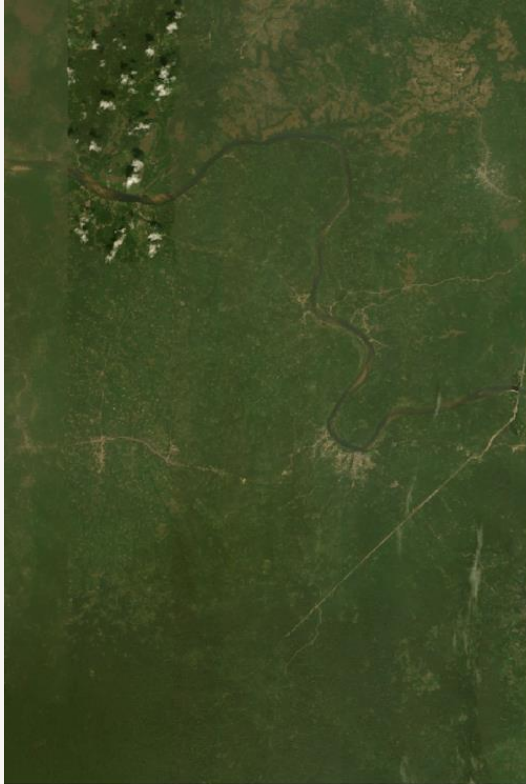
JRC Forest Cover



Satelligence Forest Baseline

Palm Oil in Guatemala

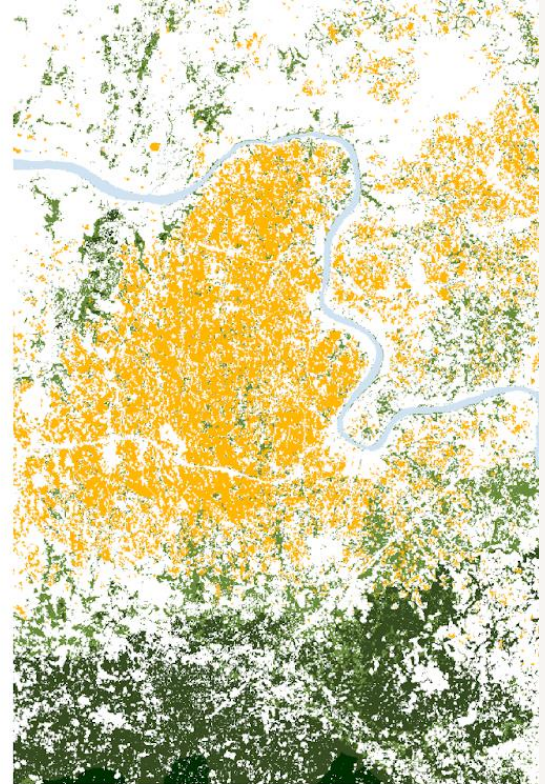
2. Risk Assessment: Open Data is **Unsafe**



Bing VHR Satellite



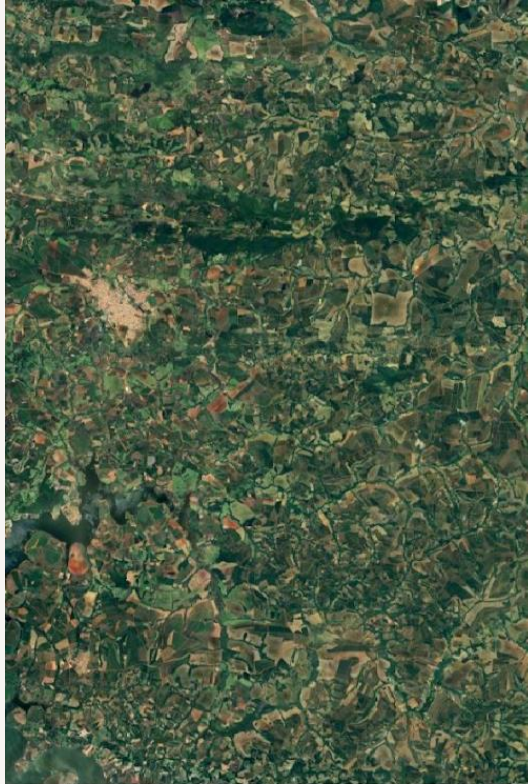
JRC Forest Cover



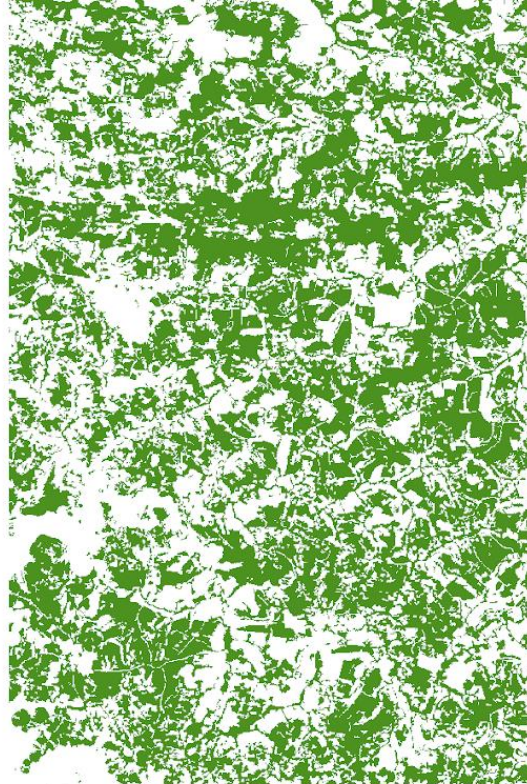
Satelligence Forest Baseline

Oil palm mistaken for forest...

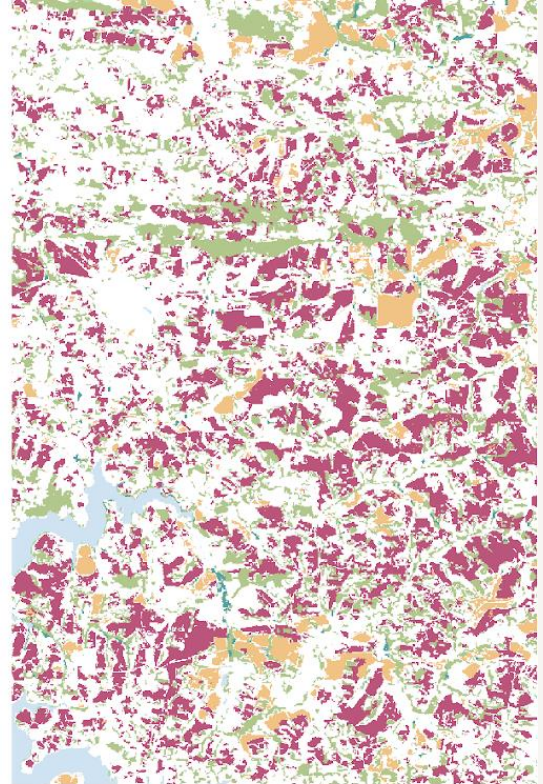
2. Risk Assessment: Open Data is **Unsafe**



Google VHR Satellite



JRC Forest Cover



Satelligence Forest Baseline

Coffee and Soy in Brazil

2. Risk Assessment: Open Data is Unsafe



Palm underestimated ~10% and deforestation overestimated:

- ➔ Excluding compliant producers
- ➔ Reduction of your sustainable volume
- ➔ Increased risk of fines

Work together as a collective to raise awareness with EC!

2. Risk Assessment: requires field verification



Continuously verify forest and commodity maps, deforestation alerts with:

Field surveys with gps photos collected by

our team

our global client and partner network

and scientists



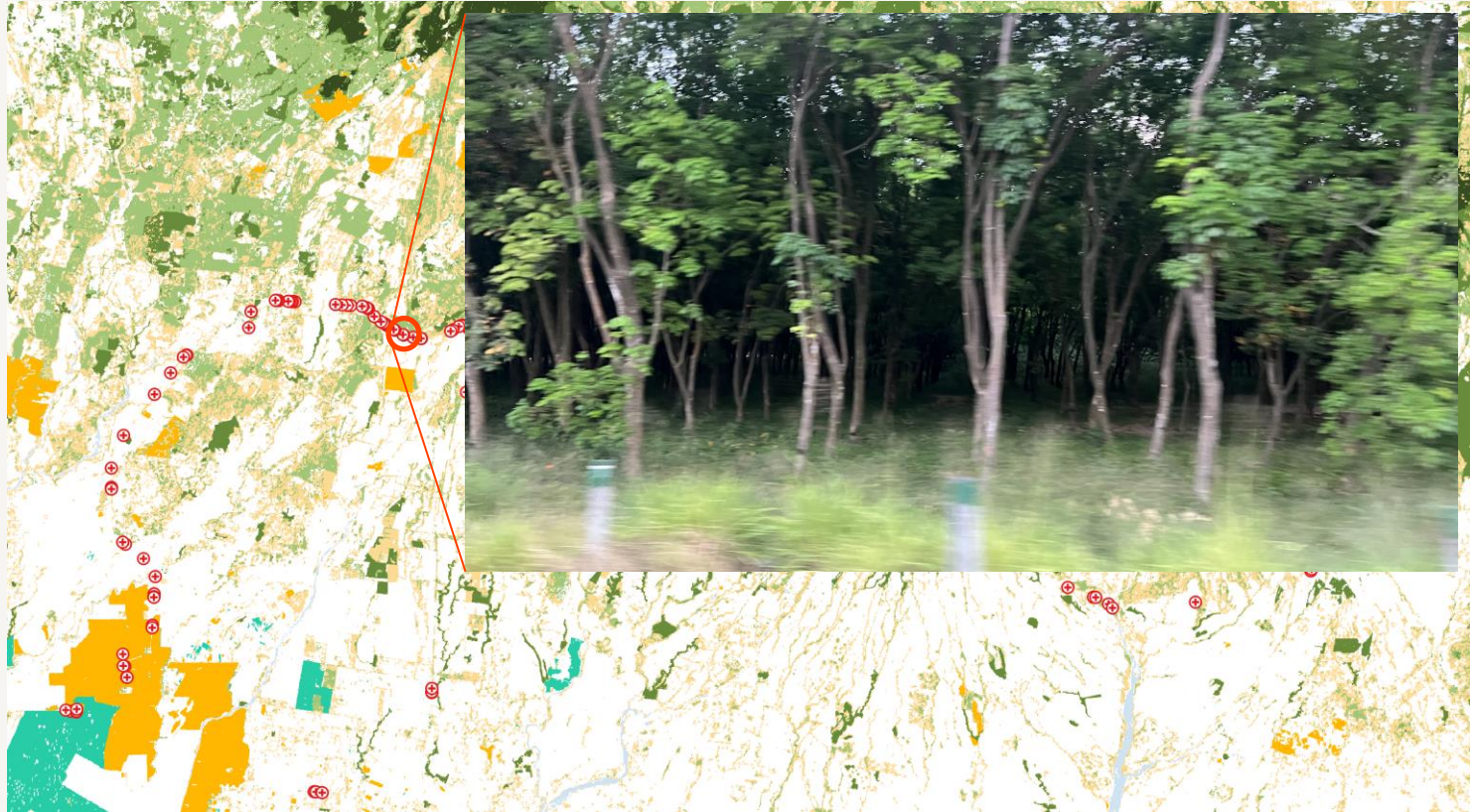
2. Risk Assessment: requires field verification



2. Risk Assessment: requires field verification



2. Risk Assessment: requires field verification



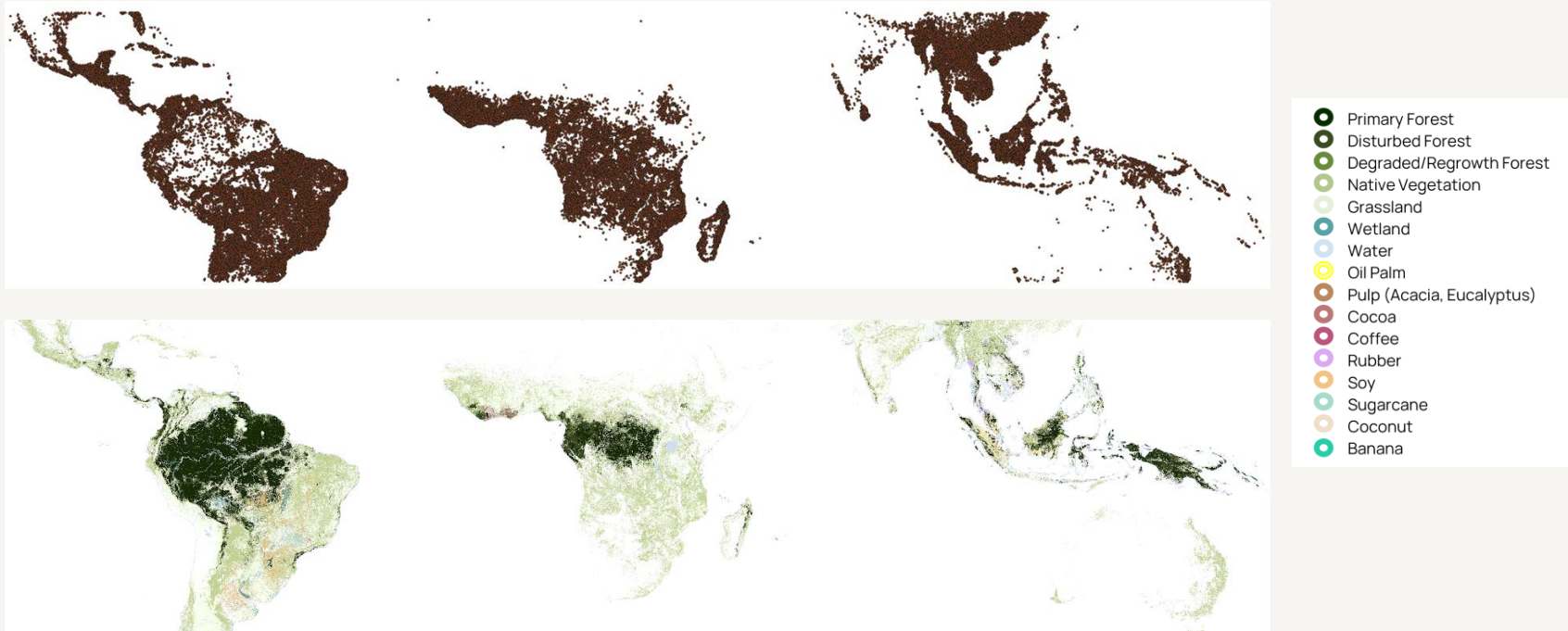
2. Risk Assessment: requires field verification



2. Risk Assessment: requires commodity maps



Fieldwork and Partnerships: >1.2 million labels from field surveys with photos collected by our team, scientists, and our global client and partner network.





- Event Feed
- Map**
- Supply Chain (beta)
- Dashboard
- Export

Niels Wieldard
Super Palm

- Help
- Privacy
- Support



1000km



Alignment Challenge

No one will create the perfect map

Map disagreements will lead to arguments...

- ✓ **Promote producer country mapping**
- ✓ **Satelligence grievance resolution approach**
- ✓ **Satelligence global commodity maps**

Investigating ▶

Grievance Case

Q SI

Mills

- Sei Manana (PO1000008095)
- Sawit sukses (PO1000001761)
- Sejati (PO1000004467)

Concessions

- SKJ Resources
- PT KSS
- Patecati SAS

Companies & Groups

- Shan Ying Group
- Shennong Corporation
- SDL

General Information

Grievance Type: Select grievance type

Received on: DD/MM/YYYY

Raised by: Type name of grievance raiser

Location/Region: Type location of the grievance

Summary

Add text to keep track of your updates.
Add links to evidence on this grievance.

Save



Subscribe and join us
team@satelligence.com

Ask what you need to know

Clients get access to our Community of Practice



Niels Wielaard
Founder & CEO

wilaard@satelligence.com



www.satelligence.com